



Cosmetic and Laser Lamp Catalog

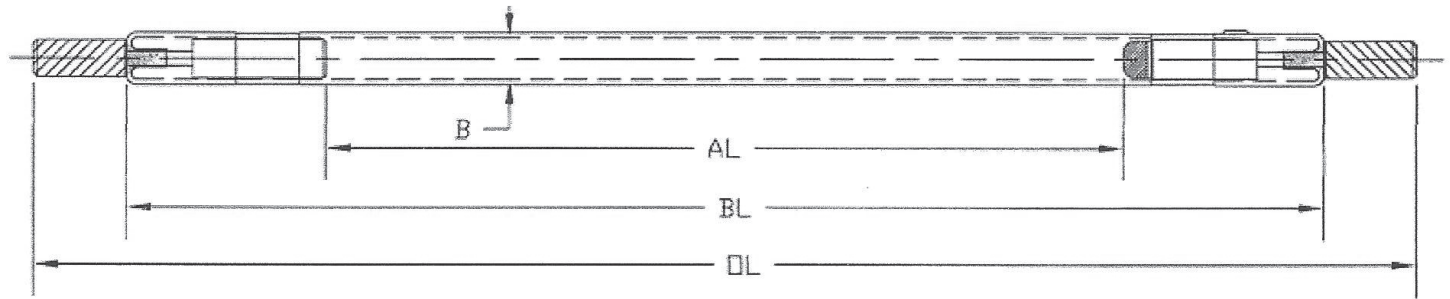
Since 1935, Amglo has established its leadership in the lighting industry by offering a diversified approach to lamp technology and production. Amglo's global manufacturing facilities, with over 500 employees with an average work experience of 15 years, provide a variety of xenon lamp and laser products to meet specific customer needs with delivery lead times of under four weeks. Amglo's Xenon Lamp Division, located just outside Chicago, is the largest xenon flash lamp manufacturer in North America. This facility has over 1,600 different lamp designs ranging from 1–2 watts to 1,800 watts.

Amglo Specialty Lamps Catalog

Technology with a Solid Foundation

Amglo is unique to other flashlamp providers in that it manufactures its own proprietary cathodes internally using state of the art pressing and sintering processes. Amglo's high load air cooled convection applications became the standard, providing Amglo with its strong foundation in cathode design. Amglo's in-house capability promotes cathode customization specific to each application, challenging historical benchmarks that have defined lamp lifetimes. Amglo's flashlamp facilities are supported by its engineering and product development staff and are fully equipped with state-of-the-art testing equipment for all photometric, vibration, environmental and finite element and X-ray analysis of materials and structure.

CHART DC PULSED LAMPS



ITEM	BORE (B) DIAMETER (mm)	ARC (AL) LENGTH (mm)	BODY (BL) LENGTH (mm)	OVERALL LENGTH (OL) (mm)	RECOMMENDED TRIGGER PULSE (KV)	OPERATING VOLTS (MIN)	OPERATING VOLTS (MAX)	AVERAGE MAX POWER WATTS	IMPEDANCE (KO) (OHMS-AMPS)
A	5	75	137	175	16	500	2000	2300	19
B	5	150	212	250	18	800	3000	4500	38
C	6	75	137	175	16	500	2000	2700	16
D	6	150	212	250	18	800	3000	4900	32
E	7	125	187	225	18	700	2700	5200	22
F	7	205	300	350	18	1100	4500	10000	45
G	8	150	212	250	20	1000	3000	7500	24
H	8	300	350	400	20	1600	5000	15000	48
I	10	200	255	305	20	1200	4000	12500	25
J	10	300	355	405	20	1500	5000	18000	38

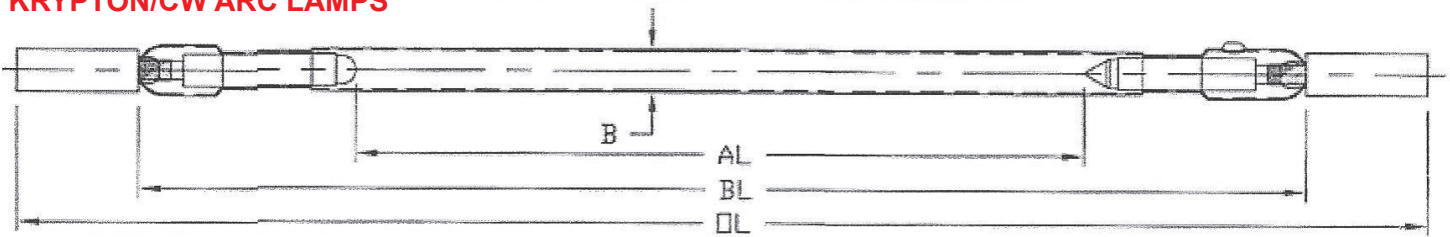
Most lamp types are customized to specific requirements. However, xenon pulse light serves many applications ranging from industrial to aesthetic to medical and disinfection applications.

Aesthetic and Medical Treatments

Intense Pulsed Light (IPL™) flashlamps for cosmetic/aesthetic applications have become very useful as xenon flashlamps produce a constant and complete UV visible IR spectrum. Typical aesthetic treatments involve removing hair, tattoos, wrinkles, birthmarks, various skin lesions, acne and acne scarring; reducing the visibility of blood vessels and skin pigmentations; rejuvenating the skin and reducing the appearance of fat and cellulite. Amglo's IPL technology provides the following benefits: stable simmer, dependable trigger, consistent lamp to lamp quality, standard and custom designs, reliable lifetime, and lamps suitable for use in SHR systems.

Amglo Specialty Lamps Catalog

KRYPTON/CW ARC LAMPS



ITEM	BORE (B) DIAMETER (mm)	ARC (AL) LENGTH (mm)	BODY (BL) LENGTH (mm)	OVERALL LENGTH (OL) (mm)	DESIGN CURRENT (AMPS)	CORRESPONDING DESIGN VOLTAGE (MAX)	POWER WATTS	STATIC IMPEDANCE OHMS
A	4	51	191	191	20	110	2200	5.5
B	4	76	140	160	20	190	3800	9.5
C	4	99	167	167	20	200	4000	10
D	4	148	223	223	20	290	5800	14.5
E	5	50	154	154	30	86	2600	2.87
F	5	84	145	175	30	155	4650	5.17
G	5	102	160	194	30	180	5400	6.00
H	5	121	223	223	30	240	7200	8.00
I	6	101	165	200	35	175	6125	5.00
J	6	170	255	377	40	255	10200	6.38
K	4	110	177	321	20	A.C.	4500	N/A
L	5	160	225	400	30	A.C.	6500	N/A
M	6	280	347	502	45	A.C.	1000	N/A

Effective Disinfection

One of Amglo's core technologies, the xenon flash lamp, has proven to be a viable for disinfection applications. There are a number of new trends developing as people learn to deal with pathogens in more sustainable ways. These new requirements support the recognition of pulsed light as a powerful disinfection tool. Amglo's advantage is that we currently manufacture xenon flash lamps for a host of other uses and can easily design and manufacture lamps in varying configurations and energy levels. These lamps can be used as an alternative to chemical treatments, providing a better alternative for use in disinfection for water treatment and food processing applications. These systems can be integrated in-line or as standalone units to supplement existing systems.

Industrial Efficiency

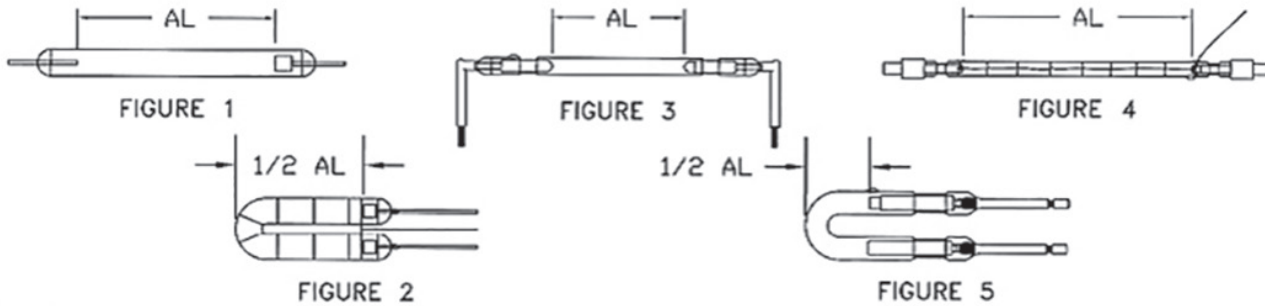
The choice of leading OEMs, Amglo's lamps are widely used throughout several manufacturing sectors where round the clock operations demand the highest quality light sources. Applications include automotive, diamond, aerospace welding, engraving, weathering, curing, inspection and semiconductor industries. With a focus on high reliability, optimum performance and long lifetime, Amglo has developed a range of products for industrial purposes where success is measured by efficiency, productivity and overall cost of ownership.

Vision Engineering

Machine vision strobes are manufactured for a range of industrial robotics production applications including sorting, package integrity, quality assurance, edge detection and part recognition label reading. They are typically sources of short duration, high intensity light pulses. The light sources are Amglo's high power xenon flashlamps. Vision engineering also offers partnering services including design, prototyping and production of machine vision strobes for customers with special applications.

Anglo Specialty Lamps Catalog

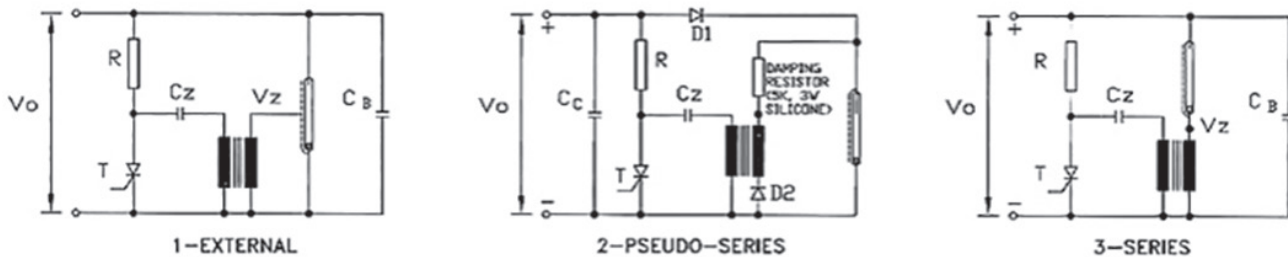
LAMPS FOR IPL™ AESTHETIC/MEDICAL APPLICATIONS



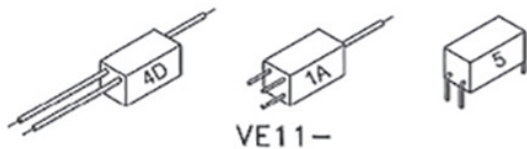
ITEM	FIGURE	ARC (AL) LENGTH (MM)	I.D./O..D. (mm)	PULSE ENERGY FLASH	LIFETIME	PRIMARY TIGGER VOLTAGE	RECOMMENDED TIRGGER COIL	COOLING	ENVELOPE MATERIAL
A	1	25	3 / 4	25	5K	200	VE11	CONV.	HARD
B	1	30	4 / 5	14	200K	200	VE11	CONV.	CDQ
C	1	58	4 / 6	80	10K	225	VE11	AIR	HARD
D	2	90	8 / 10	1000	10K	225	VE11	AIR	CDQ
E	3	50	4 / 5	400	100K	250	VE20	WATER	CDQ
F	3	50	5 / 7	500	100K	250	VE20	WATER	CDQ
G	3	84	8 / 9	750	100K	225	VE20	WATER	CDQ
H	3	96	5 / 6	1000	100K	300	VE20	WATER	CDQ
I	4	100	6 / 8	1250	150K	300	VE20	WATER	SYN. QUARTZ
J	5	25	5 / 7	175	250K	220	VE20	WATER	CDQ
K	5	56	6 / 8	230	250K	225	VE20	WATER	CDQ

Considerations:

1. All dimensions are in millimeters (mm).
2. Typical pulse width (3–10MS) are utilized in variable burst operation.
3. Specify if lamp will be simmered and advise simmer voltage/current.
4. Lamps with extremely low simmer ignition are also available.



RECOMMENDED TRIGGER TRANSFORMERS.



MAX. INPUT VOLTAGE 300V
 MAX. INPUT ENERGY 10MJ
 OUTPUT VOLTAGE 11KV
 TURNS RATIO 47:1
 DIMENSIONS: .625" X .305" X .305"



MAX. INPUT VOLTAGE 400V
 MAX. INPUT ENERGY 20MJ
 OUTPUT VOLTAGE 20KV
 TURNS RATIO 50:1
 DIMENSIONS: .860" X .50" DIA. VE20-1
 1.00" X .62" DIA. VE20-3



Anglo Kemlite Laboratories, Inc.
 215 Gateway Road, Bensenville, IL 60106

www.amglo.com

(630) 350-9470

info@amglo.com